

# The all-new i10



# Go ahead. Make a big statement.

In life, it's the small things that make a big difference. Like the all-new Hyundai i10. With its fresh and expressive design and gigantic selection of cutting-edge technology – it's a clever companion that gives you the style and flexibility you need to Go Big.

#HyundaiGoBig





## Go big and beautiful.

All flowing lines and muscular contrasts, the all-new i10's dynamic new look catches the eye in an instant. Featuring a lower roof and wider body, its lively design is like nothing else in the class. Inspired by the shape of human muscles clothed in athletic sportswear, the clean, smoothly muscled main body has been shaped to provide maximum inner space. And in the front, the dynamic headlamps and sculpted bumper underscore the bold stance to make a powerfully modern statement.



Get in  
for a big surprise.





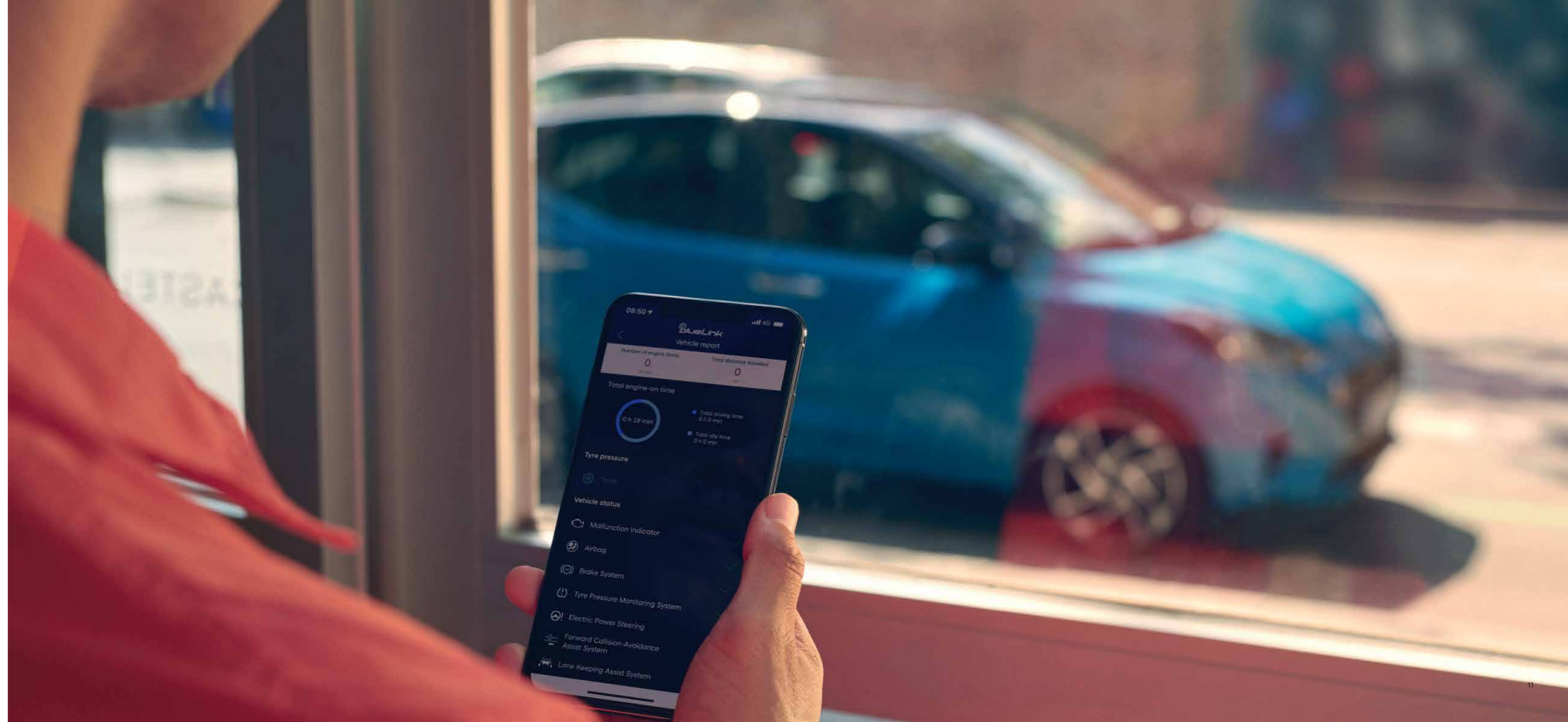
## Precision roominess.

Inside the stylish new cabin, precise patterns, fresh textures and the latest multi-media technology welcome you with a clean and modern look. Inspired by the sharp technical graphics of athletic gear, soft surfaces and sharp lines abound inside the all-new i10. An eye-catching new 3D honeycomb pattern is featured on the dashboard and door panels for a sporty edge throughout the cockpit. The circular air-vents visually extend the dashboard into the door trim for a wider, more spacious feeling.



# Connected Car Services.

Control your car from your smartphone – or with your voice. Bluelink Connected Car Services bring seamless connectivity directly into the all-new i10 with online voice recognition and a wide range of features to make your drive more convenient and enjoyable like: Find my car, Remote door lock & unlock and Destination send to car.



# Stay in touch with Bluelink®



## Enjoy seamless connectivity both in-car and with the app.

On top of the many clever features you can control with the Bluelink app, a free five-year subscription to Hyundai's LIVE Services is also included with the navigation system to let you make the most of Bluelink® Connected Car Services. Like for example with real-time traffic information to provide you with the fastest routes according to prevailing conditions. Save time on the road and enjoy precise arrival time estimates.



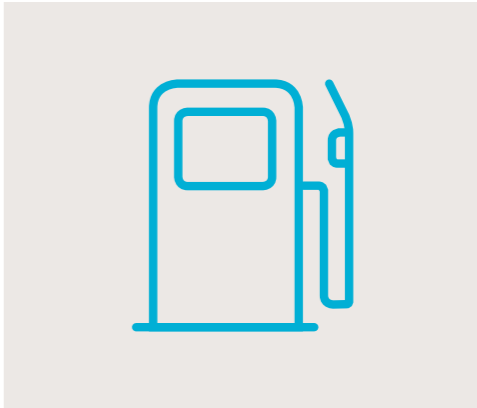
**Destination send to car**  
Simply get in and press go. If your i10 is equipped with navigation, you can use the Bluelink app to search for destinations while outside of your car. Bluelink then syncs with your navigation system, loading the route so that it is ready to go when you are.

**Find my car**  
Forgot where you parked? No problem. Just open the Bluelink app and the map will guide you there.



**Remote door lock & unlock**  
Forget to lock your car? Don't worry, your i10 will let you know by sending a push notification to your smartphone. Then, after entering your PIN, you can lock or unlock your i10 using a button in the Bluelink app.

**On-demand diagnostics**  
For more peace of mind, you can run a full vehicle diagnostic check on your vehicle's health using the Bluelink app on your smartphone.



**Live fuel price information**  
Find fuel when you need it, at a nice price – the continually updated fuel service coverage provides you with current fuel prices and information on location, opening times, and payment methods.

**On & off-street parking**  
Find a parking spot faster for more efficient and stress-free parking. The parking information features help you find and compare parking options in garages, parking lots and on the street..



## Experience class-leading connectivity.

The all-new i10 offers you the most comprehensive connectivity in its class. The new 8" touch-screen mirrors the contents of your smartphone thanks to Apple CarPlay™ and Android Auto™. When equipped with the navigation system, a free five-year subscription to Hyundai's LIVE Services is included.



Charge your smartphone the easy way. The wireless charging tray conveniently located in the centre console lets you easily charge a compatible Qi-enabled smartphone without the use of cables. USB slots are also on board.

**Perfect for small spaces  
and big moments.**

City streets can get a bit crowded sometimes. So when it comes to navigating narrow intersections and squeezing into tight parking spaces, you'll love this clever city car's refreshing manoeuvrability. Measuring just 3.67 metres long and 1.68 metres wide, the all-new i10 combines a compact exterior with a roomy interior. So no matter if you're parallel parking in traffic or packing loads of luggage for a weekend get-away, the all-new i10 gives you plenty of cargo space and flexibility to live your life in a big way.





## Four or five seats? Your choice.

Featuring more room for passengers than you would expect from a car this size, this compact space wonder fits everything your city life can throw at it. The all-new i10 is available with four or five seats. Thanks to longer wheelbase than its predecessor, the i10 offers plenty roominess for both front and rear passengers.

# Clever details for more convenience.



## Super storage

From the open compartment above the glove box to larger storage bins in the doors – the all-new i10 comes with plenty of practical and convenient storage spaces to fit your busy life.



## Versatile load space

One of the biggest in the segment, the 252-litre boot is also very adaptable. The two-stage luggage board maximises space in the lower position, the upper position creates a level loading area for long items. And the one-hand folding split rear seats drop down quickly for 1050 litres of cargo space.



## Rear view camera

Reversing made easy. The rear view camera system gives you an unobstructed look behind your i10 while in reverse gear.



# The pleasure of performance.

Depending on your preference, you can choose from two multi-point fuel injection petrol engines: a 1.0-litre 3-cylinder with 67 PS and 96 Nm torque, as well as a 1.2-litre 4-cylinder with 84 PS and 118 Nm torque. Both engines are available with two transmission choices.

# Drivetrain technology.



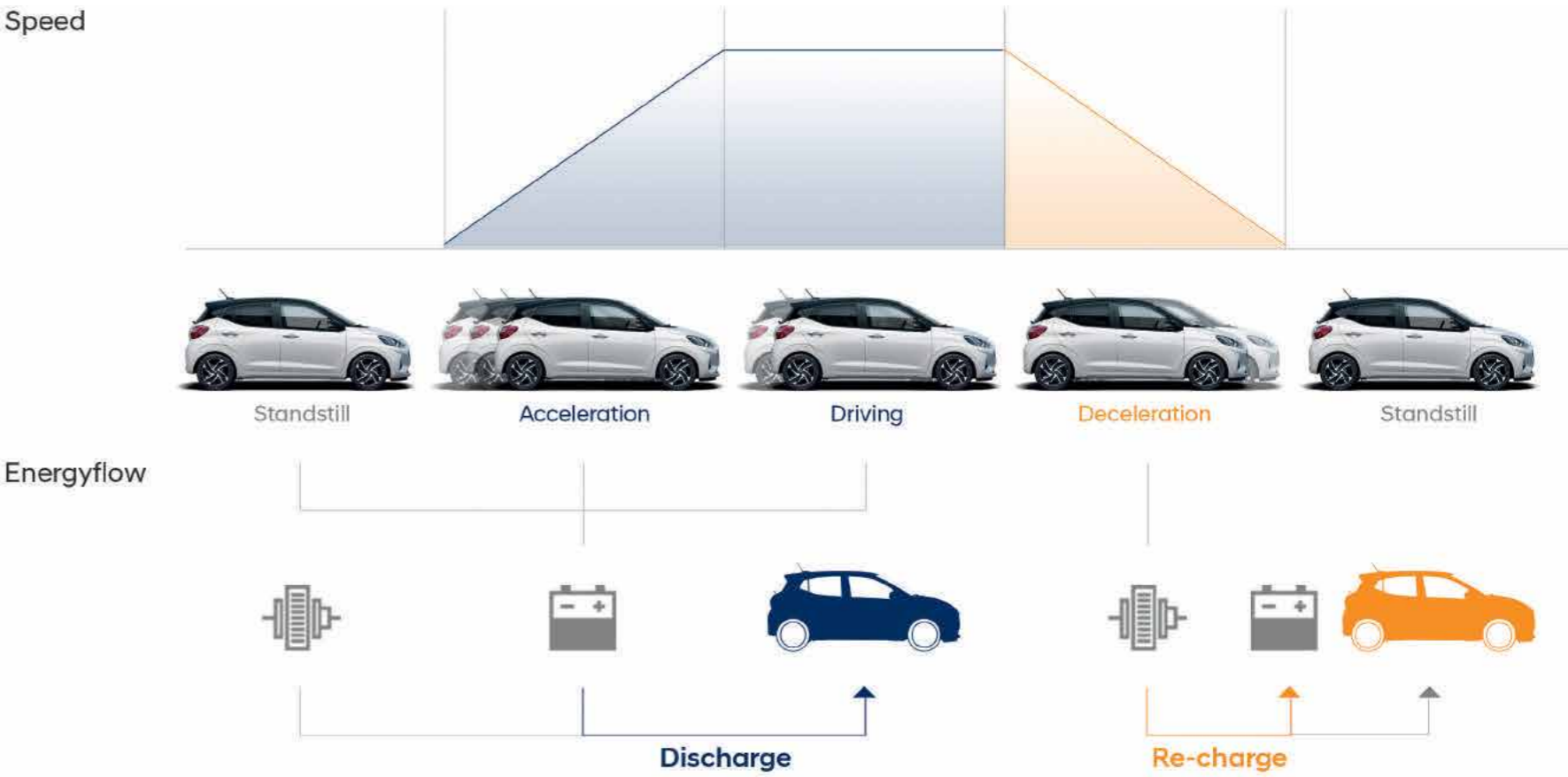
### Automated Manual Transmission

The five-gear automated manual transmission (AMT) combines easy and relaxed driving like an automatic transmission with higher efficiency thanks to its lighter weight and reduced friction compared to a traditional automatic transmission.



### Manual Transmission

The smooth-shifting 5-speed manual transmission is designed for fast, precise gearshifts.



### Energy Regeneration System

More energy for better fuel efficiency. The all-new Hyundai i10 is equipped with an intelligent Energy Regeneration System (ERS), which captures the kinetic energy created by forward motion and uses it to power your car. As soon as you take your foot off the accelerator and coast in gear,

the system transforms kinetic energy into electricity and stores it in the battery. When accelerating, ERS then uses this electricity to power the on-board electrical systems, easing the load on the motor and increasing fuel efficiency.

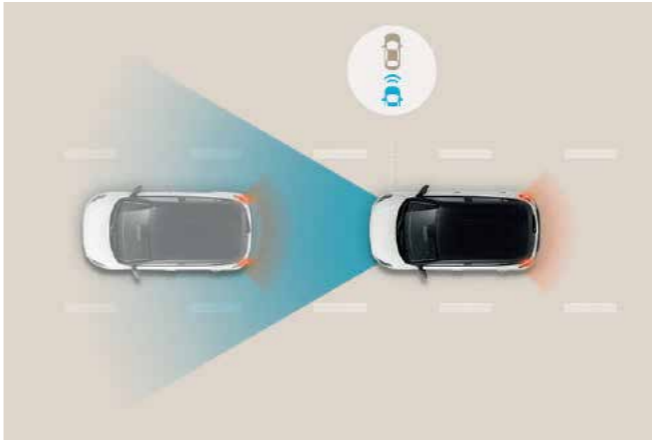
# Technology for safety and peace of mind.

The all-new i10 offers one of the most comprehensive active safety technology packages in its class, which includes Hyundai SmartSense – our cutting-edge Advanced Driver Assistance Systems – built to provide you with more safety and peace of mind. E-call is also on board as standard equipment. This feature automatically calls emergency services if you're in an accident and the airbags deploy. You can also push the SOS button for emergency assistance 24/7, 365 days a year.



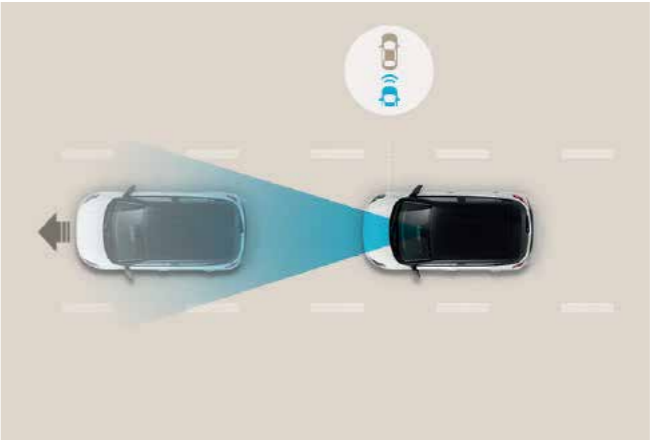


# Hyundai SmartSense



**Lane Keeping Assist (LKA)**  
The Lane Keeping Assist (LKA) uses the front multi-function camera to monitor the lines of the road. In case of an unintended lane departure, it warns you and can apply counter steering torque to guide the car back to the lane.

**Forward Collision-Avoidance Assist (FCA)**  
Sensing the road ahead with the multi-function camera, FCA warns you and then automatically brakes when it detects sudden braking by a car ahead. Includes pedestrian detection.



**High Beam Assist (HBA)**  
Less stress and maximum visibility. HBA not only detects oncoming vehicles but also vehicles in the same lane ahead and switches to low-beam as appropriate.

**Leading Vehicle Departure Alert (LVDA)**  
This clever feature for city driving alerts the driver when the vehicle in front departs from an idle state, like at a stoplight or in a traffic jam.

wip



wip

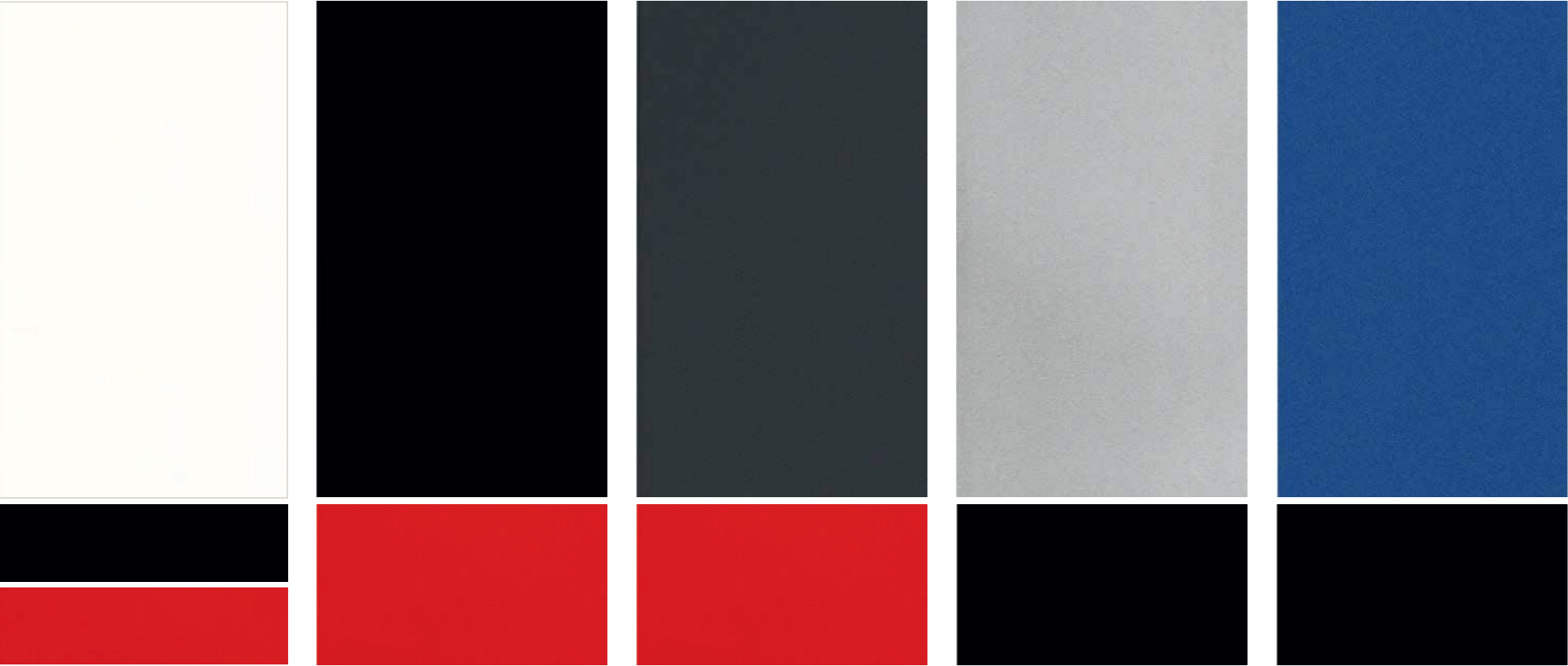


**Driver Attention Warning (DAW)**  
When a pattern of fatigue or distraction is identified, the system gets your attention with an alert and pop-up message suggesting a break.

**Intelligent Speed Limit Warning (ISLW)**  
Recognizes road speed signs and displays the speed limit in real time in both the navigation system display and instrument cluster.

# Personalise your perfect version.

With 10 exterior colours and a two-tone roof available in black or red to choose from – your can personalise your own distinctive look with 22 colour combinations.



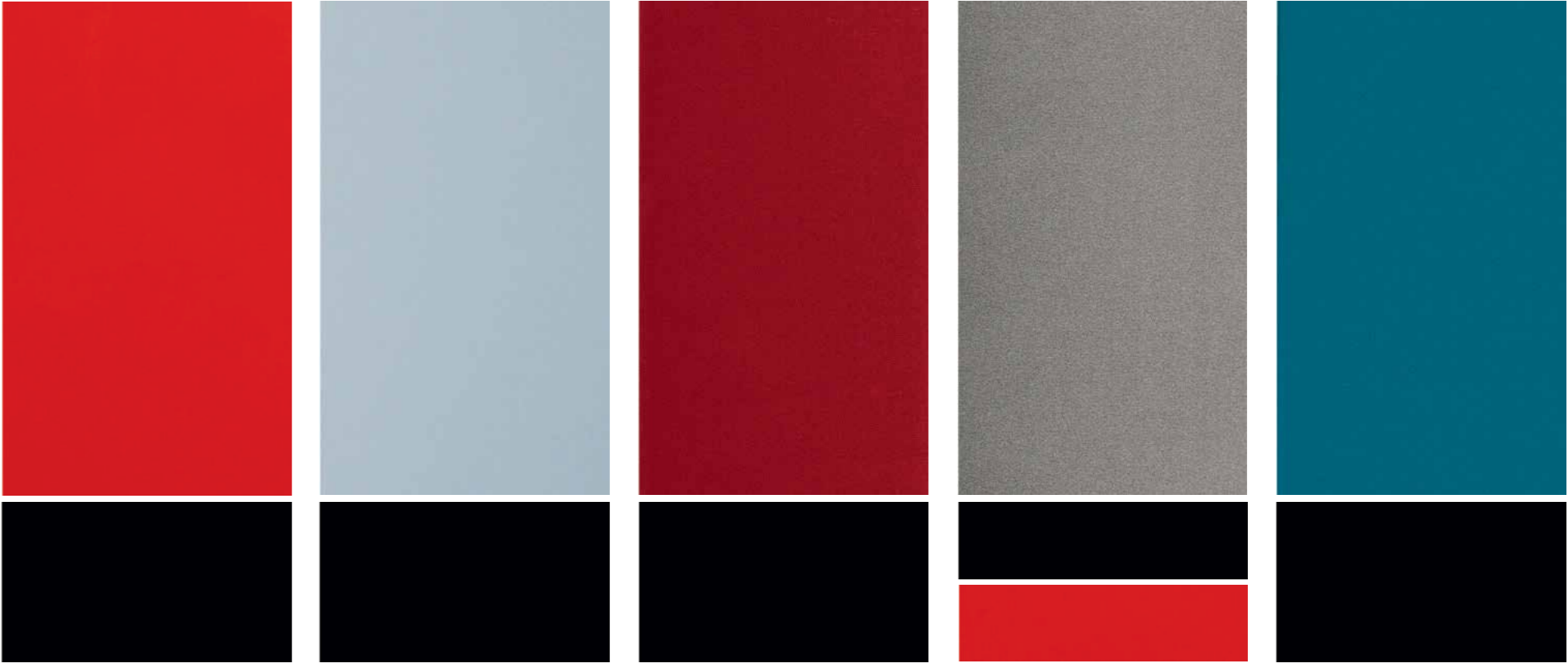
**Polar White** body colour is available as a two-tone version with the roof in Phantom Black or Tomato Red.

**Phantom Black** body colour is available as a two-tone version with the roof in Tomato Red.

**Star Dust** body colour is available as a two-tone version with the roof in Tomato Red.

**Sleek Silver** body colour is available as a two-tone version with the roof in Phantom Black.

**Champion Blue** body colour is available as a two-tone version with the roof in Phantom Black.



**Tomato Red** body colour is available as a two-tone version with the roof in Phantom Black.

**Slate Blue** body colour is available as a two-tone version with the roof in Phantom Black.

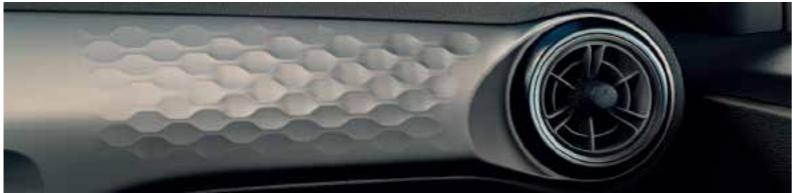
**Dragon Red** body colour is available as a two-tone version with the roof in Phantom Black.

**Brass** body colour is available as a two-tone version with the roof in Phantom Black or Tomato Red.

**Aqua Turquoise** body colour is available as a two-tone version with the roof in Phantom Black.

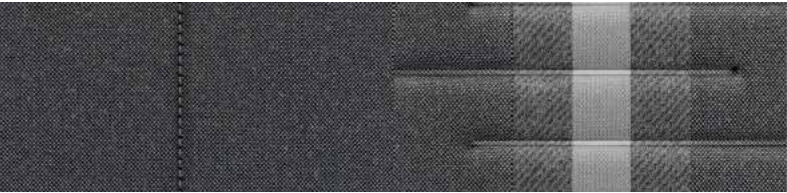
# Find your favourite.

Choose from four different interior colour combinations to personalize your perfect interior.



## Dashboard Colours

Shale Grey, Brass Metal, Obsidian Black (White stripes), Obsidian Black



## Seat Colours

Shale Grey (Standard TOP/Optional GLS), Brass Metal (Standard TOP/Optional GLS), Obsidian Black white stripes (Standard GLS), Obsidian Black (Standard GL)

Wheels



16" Alloy Wheel



15" Alloy Wheel

Specifications



Type	1.0 MPI		1.2 MPI
Motor Type	3-cylinder MPI		4-cylinder MPI
Max. Power (kW)	49		64
Max. Power (PS)	67		84
Max. Torque (Nm)	96		118
Transmission	5 MT / 5 AMT		5 MT / 5 AMT
	5 Seats (5 MT / 5 AMT)	4 Seats (Eco package)	
Max. Speed (km/h)	156 / 156	147	171 / 171
0 to 100 km/h acceleration (sec)	14.6 / 17.3	16.6	12.6 / 15.8
Fuel consumption combined NEDC 2.0 (l/100 km)	4.5 / 4.5	4.3	4.7 / 4.7
Fuel consumption combined WLTP (l/100 km)	5.1 / 5.3	4.9	5.3 / 5.5
CO <sub>2</sub> target NEDC 2.0 (g/km)	103 / 103	97	107 / 107
MCO <sub>2</sub> target WLTP (g/km)	116 / 121	112	121 / 126
Brakes (mm)			
Front (Diameter)	252		
Rear (Diameter)	234		
Suspension			
Front	McPherson Strut		
Rear	Coupled Torsion Beam Axle		
Wheel type			
	Tyres		
14-inch steel wheels	175/65R14		
15-inch alloy wheels	185/55R15		
16-inch alloy wheels	195/45R16		



Overall Width 1,680  
Wheel Tread 1,467



Overall Lentgh 3,675  
Wheel Base 2,425

Overall Height

1,483



Wheel Tread 1,478

Unit : mm

Dealer stamp



<sup>1</sup> The Hyundai 5-Year Unlimited Mileage Warranty applies only to Hyundai vehicles that have been originally sold by an authorized Hyundai dealer to an end-customer, as set out in the terms and conditions of the warranty booklet. Contact your official Hyundai dealer for further information.

All the information contained in this brochure is provisional and subject to change without notice and is intended only as preliminary notification. Possible variations in the representation of vehicle colours are due to the limitations of printing technology. The products shown correspond to the offer and the range of equipment for European markets. The vehicles shown in this brochure may be equipped with additional equipment at extra cost, and not all model versions are included in this brochure. Hyundai Motor Europe reserves the right to make changes to technical specifications and equipment content without notice. Please consult your Hyundai dealer for exact details.

**Hyundai Motor Company**

<http://worldwide.hyundai.com>

GEN. LHD 1111 ENG. WD

Copyright © 2019 Hyundai Motor Europe. All Rights Reserved.