

All-new i20





Safety ready. Connectivity ready.

Human ready.

As humans, we are always ready to make the most of every moment. To seize the day, embrace the beautiful, and enjoy the moment. But with the world becoming more techy every day, does that mean it's also becoming less human? Absolutely not. We believe that technology should support you in living your life exactly as you are – and want to be. That's why the all-new i20 is equipped with the latest smart tech like highly efficient engines and best-in-class safety and connectivity features. We added more technology, so you can be more human.

Setting new standards.

Dynamic and distinctive, the all-new i20 is setting new standards in the small car segment. Wider, longer and featuring a lower roof than its predecessor, this stylish new hatch combines roomy interior space with best-in-class safety and connectivity features. It's also the first car in Europe to feature our new Sensuous Sportiness design philosophy – a harmonious combination of energetic proportions, style and technology.





Designed to stand out.

The all-new i20's sensuously sporty character is accentuated by an elegantly sculpted front and rear end design. The sweeping full LED headlamps and sharp Daytime Running Lights are framed by prominently sculpted air intakes and a bold new grille for a very powerful first impression. The completely reimagined rear bumper rounds out the all-new i20's fresh look. The result? A car that looks as good as it drives, with a refreshingly dynamic design that truly stands out from the crowd.

The beauty of confidence.

Sleekly confident and visually stunning, the all-new i20's dynamic silhouette draws the eye in to the completely redefined exterior design. The all-new i20's signature dynamic look is achieved by bold design choices – prominently visible in the new C-pillar design and z-shaped LED combination lamps. The flowing rear lamps extend visually across the boot lid, connecting them in the rear for a truly unique look. Newly designed 17" alloy wheels enhance the car's dominant stance on the road even further.



Design highlights.



The distinctive front bumper is framed by prominent air intakes and a bold new grille in mesh design for a powerful first impression.



The sweeping full LED headlamps are dynamically accentuated by the sharp Daytime Running Lights.



The flowing z-shaped LED combination lamps extend visually across the boot lid, connecting the lamps in the rear for a truly unique look.



Technology

that lets you be human.

Humans are deeply sophisticated beings, but we're not perfect. We lose our keys, spill our coffee and miss our turns. That's what makes us human. And the good thing is: nobody has to be perfect. That's why the all-new i20 is equipped with a wide range of smart tech. Our wide range of cutting-edge safety, connectivity and convenience features is the perfect answer to human imperfection. We added more technology, so you can be more human.

Enjoy best-in-class connectivity.

Featuring the best-in-class digital cockpit and connectivity offering, the all-new i20 delivers the latest smart tech to make your life easier – and your drive more enjoyable. Enjoy state-of-the-art connectivity with dual big screens with split-screen functionality. The 10.25" digital cluster and 10.25" centre touchscreen have been visually combined for an elegant high-tech look and top usability. And with Bluelink® Connected Car Services, you can control your car from your smartphone – or with your voice. It also comes with a free 5-year subscription to LIVE Services, with real-time traffic, weather, POI information and speed camera alerts*. Apple CarPlay™ and Android Auto™ are on board as well so you can connect your phone and have your music, phone and app functions right up on the big screen. And starting in summer 2020, wireless phone mirroring will be introduced for the 8" floating touch screen, meaning you won't even have to plug in your phone to take advantage of this clever feature. Naturally, a wireless charging pad is also located in the centre console for even more convenience.

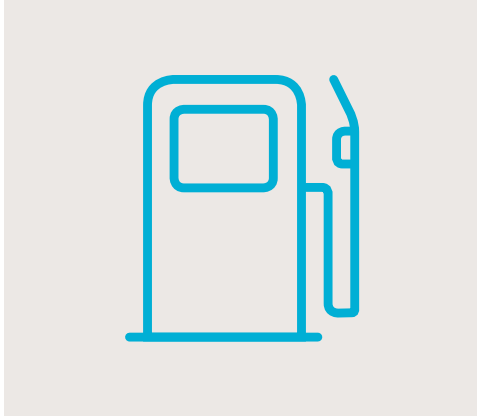
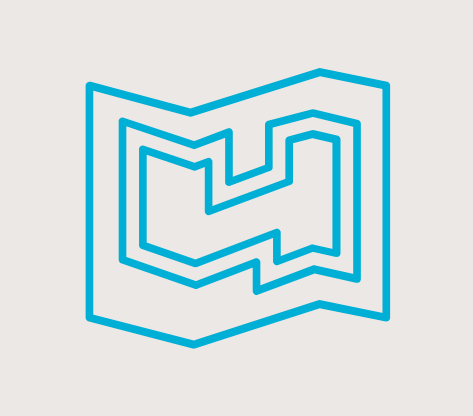
Apple CarPlay™ is a registered trademark of Apple Inc. Android Auto™ is a registered trademark of Google Inc.
*The speed camera alert feature is not available in all countries.



Bluelink® Connected Car Services.



Control your car from your smartphone – or with your voice. Bluelink® Connected Car Services bring seamless connectivity directly into the all-new i20 with online voice recognition and a wide range of features to make your drive more convenient and enjoyable. On top of the many clever features you can control with the Bluelink app, a free five-year subscription to Hyundai’s LIVE Services is also included with the navigation system.



Destination send to car.
Simply get in and press go. If your i20 is equipped with navigation, you can use the Bluelink app to search for destinations while outside of your car. Bluelink then syncs with your navigation system, loading the route so that it is ready to go when you are.

Find my car.
Forgot where you parked? No problem. Just open the Bluelink app and the map will guide you there.

Remote door lock & unlock.
Forget to lock your car? Don't worry, your i20 will let you know by sending a push notification to your smartphone. Then, after entering your PIN, you can lock or unlock the doors using a button in the Bluelink app.

On-demand diagnostics.
For more peace of mind, you can run a full vehicle diagnostic check on your vehicle's health using the Bluelink app on your smartphone.

Live fuel price information.
Find fuel when you need it, at a nice price – the continually updated fuel service coverage provides you with current fuel prices and information on location, opening times, and payment methods – all displayed on the navigation touch screen.

On & off-street parking.
Find a parking spot faster for more efficient and stress-free parking. The parking information features help you find and compare parking options in garages, parking lots and on the street.

Connected Routing.
Enjoy more accurate traffic information, more precise times of arrival, and more reliable route recalculations so you get there faster. A powerful new Hyundai Cloud server uses real-time and historical data for better routing and forecasting.

Last Mile Guidance.
If you have to park your i20 before you reach your end destination, you can hand over navigation from the car to the app. Your phone will then guide you where you want to go with the help of augmented reality or Google Maps.

Space and style.

Sit back and enjoy the ride. Delivering best-in-class interior space with increased shoulder room as well as more rear legroom compared to its predecessor – Hyundai's designers have also created a fresh new look with plenty of room to relax. And when it comes to comfort, a wide range of innovative aesthetic and technical solutions have been applied to create an airy, modern atmosphere.

Worried about boot space? Don't be. We've got you covered there as well. Compared to its predecessor, luggage volume has increased by 26 litres to 352 litres (VDA). So you'll enjoy plenty of room for luggage or groceries, plus a boot shelf storage system that can be quickly stored down out of the way to make space for tall items. Need even more room? Simply fold down the rear seats to create more space when you need it.





Sophisticated, high-tech interior.

Sophisticated and technologically advanced, the sculpted interior of the all-new i20 is designed for the digital age. The high-tech look of the dual 10.25" screens are emphasized further by LED mood lighting, which sets a subtle, but sophisticated blue accent in the cockpit. The doors embrace the dashboard in an elegant, sensual way, inspired by shapes found in nature. The sculpture of the doors perfectly matches the instrument panel section. Sleek horizontal blades give the prominent dashboard an unconventionally stylish look, accentuating the slick and wide design of the front fascia.



Convenience highlights.



Wireless charging
A 10W high-speed wireless charging tray is located conveniently in the centre console. Now you can easily and quickly charge a compatible Qi-enabled smartphone without the hassle of having to plug it in.



E-call button
This feature automatically calls emergency services if you're in an accident and the airbags deploy. You can also push the SOS button for emergency assistance 24/7, 365 days a year.



Bose audio system
Enjoy amazing sound with the high-end Bose audio system. With eight high-performance speakers including a subwoofer, it provides a premium listening experience that makes every drive just that much better.



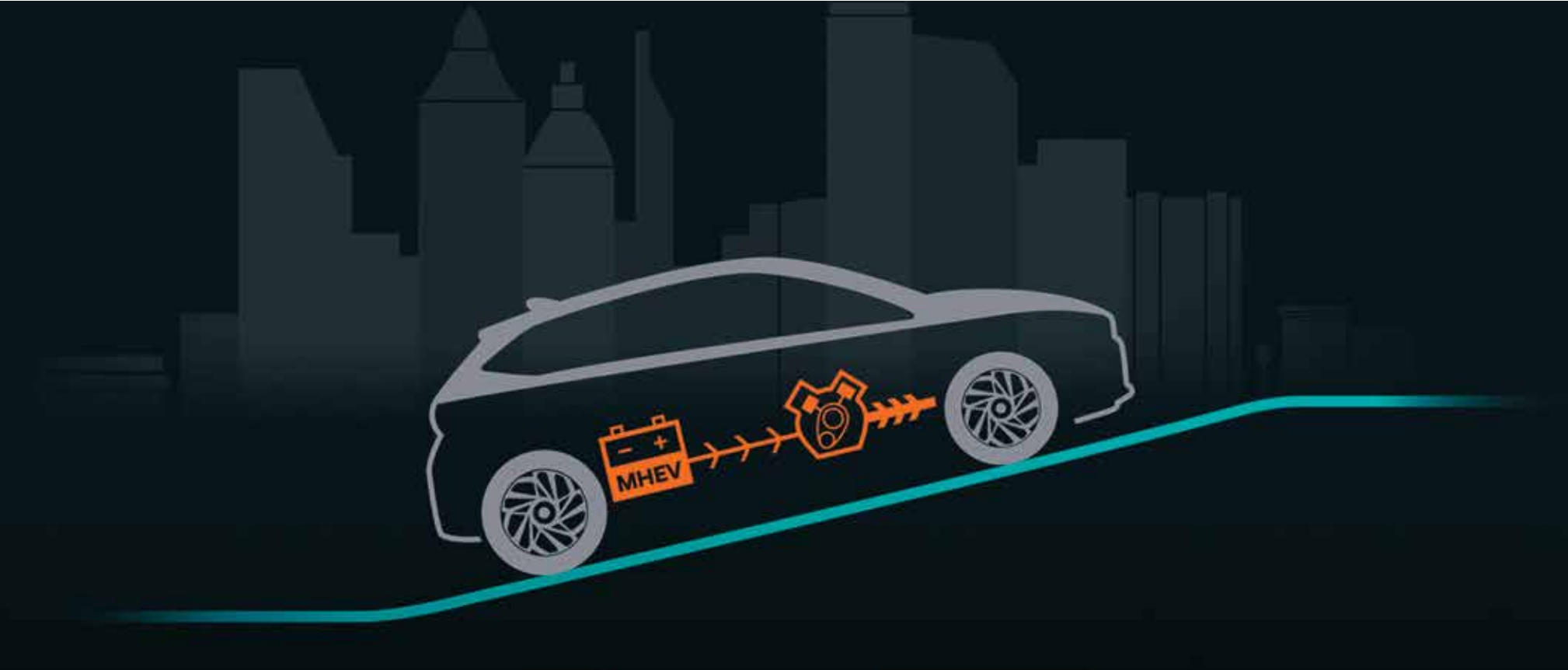
More efficiency.

More powertrain choices.

The all-new i20 comes with four new engine options featuring best-in-class CO₂ efficiency – because preserving the environment is as important to us as it is to you. At the top of the range, a 1.0 T-GDi petrol engine is available with 100 PS or 120 PS. It can be equipped with a 48-volt mild hybrid system, either as an option with the 100 PS or as standard with the 120 PS engine. The mild hybrid system contributes to a 3-4% reduction of fuel consumption and CO₂ emissions.

In terms of transmissions, the mild hybrid system is available with a seven-speed dual clutch transmission (7DCT) or a newly developed six-speed Intelligent Manual Transmission (iMT). iMT can decouple the engine from the transmission to further reduce fuel consumption. When not mated to the 48-volt mild hybrid, the 1.0 T-GDi 100 PS is available with the 7DCT or a manual 6-speed gearbox. A 1.2-litre MPi petrol engine is also available with 84 PS and a five-speed manual transmission. All engines are equipped with Idle Stop and Go as standard to help reduce even more emissions and save fuel.

Cutting-edge fuel-saving technology.



48-volt mild hybrid system

Save fuel and reduce emissions with the optional 48-volt mild hybrid system. It supports the combustion engine with an additional 60 Nm of torque during acceleration – depending on the battery's state of charge and the degree of acceleration. As a result, the powertrain's fuel economy and CO2 emissions are significantly improved. The hybrid system is also great for city traffic, as it also supports the combustion engine with faster and smoother re-starts after stops, saving additional fuel. A Mild Hybrid Starter Generator (MHSG) recuperates kinetic braking energy by converting it into electricity, and stores it into the 48V battery for later usage.



Intelligent Manual Transmission

Designed to lower emissions and increase fuel efficiency, the new Intelligent Manual Transmission (iMT) available on the all-new i20 decouples the engine from the transmission at constant speed after the driver releases the accelerator, and the vehicle goes into coasting mode*.

*Subject to driving conditions

Hyundai SmartSense.

With Hyundai SmartSense, our cutting-edge Advanced Driver Assistance Systems, the all-new i20 offers the most comprehensive safety technology package in its class – built to provide you with more safety and peace of mind. The all-new i20 offers eight new safety functions compared to its predecessor. Many of these smart tech features would not be expected to found in cars of this segment.





Blind Spot Collision-avoidance Assist (BCA)
Using two radar sensors in the lower rear bumper, the system warns you of traffic in the blind spot area. Should you set the turn indicator in such a situation, it will sound an acoustic alert and brake to avoid collision.

Parking Collision-Avoidance Assist-Reverse (PCA-R)
Enjoy additional safety when navigating narrow parking spaces in reverse gear. When a collision risk with pedestrians or obstacles is detected, the system warns you and automatically engages the brakes.



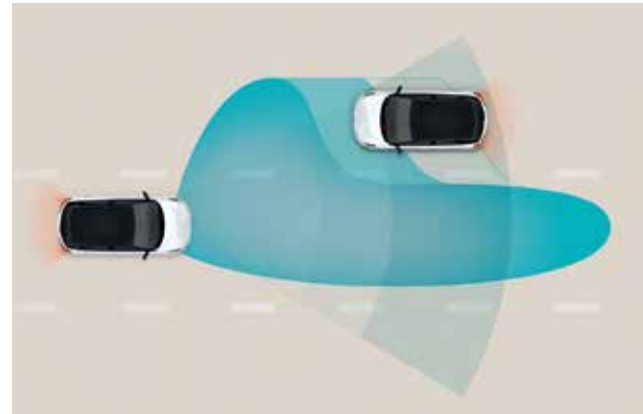
Forward Collision-avoidance Assist (FCA)
Sensing the road ahead with radar and a camera, FCA warns you and then automatically brakes when it detects sudden braking by a car ahead. The system also detects pedestrians and cyclists.

Lane Keeping Assist (LKA)
Uses the front camera to monitor the lines of the road. In case of an unintended lane departure, it will warn the driver and can apply counter steering torque to guide the car back to the lane.



Lane Following Assist (LFA)
When activated, it keeps the vehicle centred in its lane at speeds between 0 and 180 kilometres per hour on highways and city streets.

Navigation-based Smart Cruise Control (NSCC)
Utilizes the state-of-the-art navigation system to anticipate upcoming curves or straights on highways and automatically adjusts speed for safer driving



Leading Vehicle Departure Alert (LDVA)
This clever feature for city driving alerts the driver when the vehicle in front departs from an idle state, like at a stoplight or in a traffic jam.

High Beam Assist (HBA)
Less stress and maximum visibility. HBA not only detects oncoming vehicles but also vehicles in the same lane ahead and switches to low-beam as appropriate.



Rear Cross-traffic Collision-avoidance Assist (RCCA)
When reversing out of areas with low visibility, the system not only warns the driver if vehicles approach from the side – it also applies the brakes automatically.

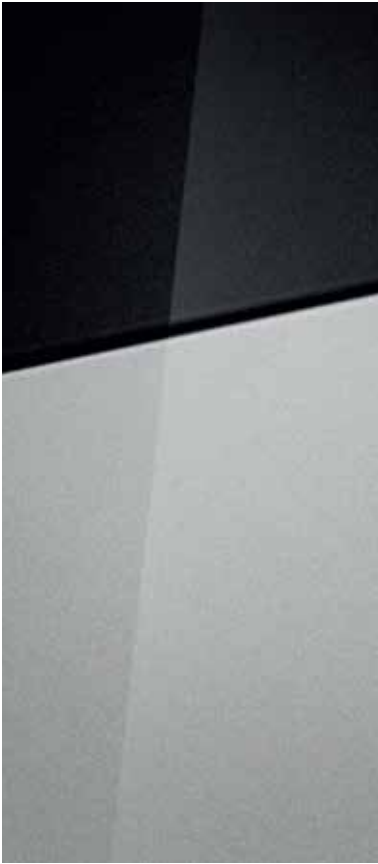
Intelligent Speed Limit Assist (ISLA)
Alerts you with audio and visual warnings when you exceed the speed limit. When combined with the manual speed limiter or Smart Cruise Control, ISLA can even adapt the speed autonomously.



Driver Attention Warning (DAW)
When a pattern of fatigue or distraction is identified, the system gets your attention with an alert and pop-up message suggesting a break.

Exterior colours.

Customize the all-new i20 to reflect your personal style. You can choose from 10 exterior colours to complement the eye-catching silhouette. On top of that, the two-tone roof in Phantom Black adds to the distinct look so you can create a car perfectly matched to your personal taste.



Phantom Black (Pearl)

Polar White (Solid)

Optional two-tone roof
available in Phantom Black

Sleek Silver (Metallic)

Optional two-tone roof
available in Phantom Black

Brass (Pearl)

Optional two-tone roof
available in Phantom Black

Aurora Grey (Pearl)

Intense Blue (Metallic)

Optional two-tone roof
available in Phantom Black

Dragon Red (Pearl)

Optional two-tone roof
available in Phantom Black

Tomato Red (Solid)

Optional two-tone roof
available in Phantom Black

Aqua Turquoise (Pearl)

Optional two-tone roof
available in Phantom Black

Clean Slate Blue (Pearl)

Optional two-tone roof
available in Phantom Black



Interior colours.

The all-new i20's completely redesigned interior is a perfect match for the car's head-turning exterior look. With plenty of customization options available, you have the tools at your disposal to tailor the car to your individual taste. Choose from three interior trims: Black Mono, Black & Grey, and Black Mono & Yellow Green for even more individualisation.



Trim Black Mono



Trim Black Mono & Grey



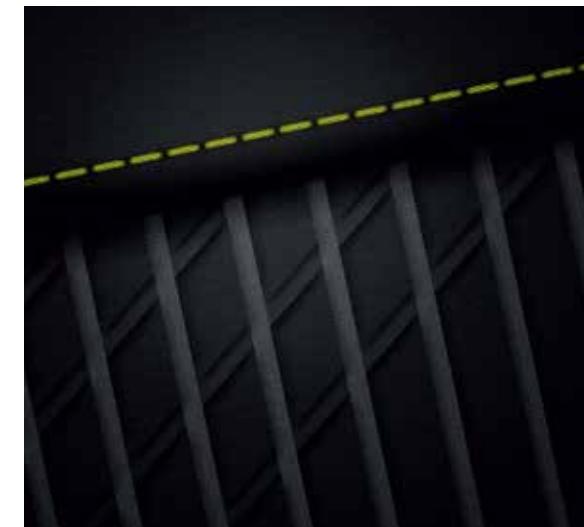
Trim Black Mono & Yellow Green



Seats Grey / Black



Seats Grey / Black



Seats Yellow Green / Black

Wheels.

The all-new i20 is now available with a range of stylish, newly designed wheels ranging in size from 15” steel wheels to 16” and 17” two-tone alloy wheels that really round off the sophisticated side view.



16” alloy wheel



17” alloy wheel



15” wheel cover

Specifications and dimensions.

Type	Enh. Kappa 1.2 MPI Euro 6D (RON 95)	Enh. Kappa 1.0 TGDI Euro 6D		Enh. Kappa 1.0 TGDI 48V Euro 6D		Enh. Kappa 1.0 TGDI 48V Euro 6D	
Displacement (cc)	1,197	998		998		998	
Number of Cylinders	4	3		3		3	
Bore x Stroke (mm)	71.0 x 75.6	71 x 84		71 x 84		71 x 84	
Compression Ratio	11	10.5		10.5		10.5	
Max. Power (kW / rpm)	62 / 6,000	74 / 4,500~6,000		74 / 4,500~6,000		88 / 4,500~6,000	
Max. Power (PS / rpm)	84 / 6,000	100 / 4,500~6,000		100 / 4,500~6,000		120 / 4,500~6,000	
Max. Torque (kgf-m / rpm)	12 / 4,200	17.5 / 1,500~4,000		17.5 / 1,500~4,000		17.5 / 1,500~4,000	20.4 / 2,000~3,500
Valve System	16 Valve Swing Arm HLA	12 Valve HLA		12 Valve HLA		12 Valve HLA	
Transmission type	Manual	Manual	DCT	Manual	DCT	Manual	DCT
Number of gears	5	6	7	6	7	6	7
Performance							
Max. Speed (km/h)	173	188	185	188	185	190	
0 to 100 km/h acceleration (sec)	13.1	10.4	11.4	10.4	11.4	10.1	10.3
Emissions and Fuel Economy							
Fuel consumption combined NEDC 2.0 (l/100 km)	TBC	TBC		TBC		TBC	
Fuel consumption combined WLTP (l/100 km)	TBC	TBC		TBC		TBC	
CO ₂ emissions combined NEDC 2.0 (g/km)	TBC	TBC		TBC		TBC	
CO ₂ emissions combined WLTP (g/km)	TBC	TBC		TBC		TBC	
Weight							
Curb Weight (lightest) (kg)	1,013	1,065	1,090	1,090	1,115	1,090	1,115
Curb Weight (highest) (kg)	1,123	1,175	1,200	1,200	1,225	1,200	1,225
Wheel type		Tyres					
15-inch steel wheels	185 / 65 R15						
16-inch alloy wheels	195 / 55 R16						
17-inch alloy wheels	215 / 45 R17						



Overall Width 1,775
Wheel Tread 1,531



Overall Length 4,040
Wheel Base 2,580

Overall Height

1,450



Wheel Tread 1,536

Unit : mm



For the human in all of us.

A smile. A wink. A touch. Body language is one of the strongest ways we humans express ourselves. And that's something that is also expressed in the sensuously sporty character of the all-new i20: Its elegantly sculpted design embodies the energy and technology contained within. And thanks to its cutting-edge smart tech like best-in-class safety and connectivity features as well as highly efficient 48V mild hybrid powertrains – it performs as good as it looks – which will put a smile on your face time and time again.

Dealer stamp



¹ The Hyundai 5-Year Unlimited Mileage Warranty applies only to Hyundai vehicles that have been originally sold by an authorized Hyundai dealer to an end-customer, as set out in the terms and conditions of the warranty booklet. Contact your official Hyundai dealer for further information.

* i20 models with diesel engines are currently compliant with the Euro 6d TEMP standard.