

SANTA FE





Bigger. Better. Beautiful.

No matter what kind of day lies ahead of you and your family, the new Santa Fe is built to make it better. Redesigned from the ground up, our flagship SUV in Europe now gives you more of everything: style, space, comfort and convenience. This versatile seven-seater now features a bolder and more distinctive design – backed up by an amazing range of new smart tech, hybrid powertrains and cutting-edge safety features.



The bolder side of refined sophistication.

Big, bold and beautiful, the new Santa Fe is not for the faint of heart. Built to command the road, it also commands a lot of attention. Its wide stance and bold design will have heads turning. Skilfully combining rugged presence and sleek sophistication, its completely reimagined exterior design is making a unique statement in the SUV segment.





Unabashedly confident. Unmistakably brilliant.

The new Santa Fe's bold wide grille merges seamlessly with its new LED headlamps, which feature unique T-shaped LED Daytime Running Lights for a truly distinctive first impression. The dynamic side proportions arch gracefully into the new taillights. Their horizontally-stretched graphics are connected with a red reflector band to visually reinforce the perfectly-balanced stance of the body for an unrivalled presence on the road.





The elegant side of roomy versatility.

Santa Fe's interior isn't just simply bigger – it's filled with more for the entire family. More space, more comfort, and more convenience. Experience a new level of luxury with every component finished in premium soft-touch materials or fine leather. Like the new “floating” centre console that flows elegantly into the plush, leather-covered dash. And if you like that, there's more. For the first time ever in a Hyundai vehicle, you can upgrade the interior and exterior with an optional Luxury Package for an even more sophisticated feel. And when it comes to connectivity, the premium interior updates are rounded off by a new 12.3” fully digital cluster and a 10.25” touch widescreen that offers brilliant clarity, easy usability and smartphone mirroring.



Inside the calm interior sanctuary, every detail has been carefully designed to make your drive safer and more relaxing. The button-type gear shift lever is conveniently located on the centre console, while the brilliant digital cluster gives you a Blind-Spot View Monitor, so you can easily see video of the side rear blind spots, making tricky lane changes safe and easy. Of course there's a wireless smartphone charging system and the 8" navigation systems offers the convenience of wireless smartphone mirroring.



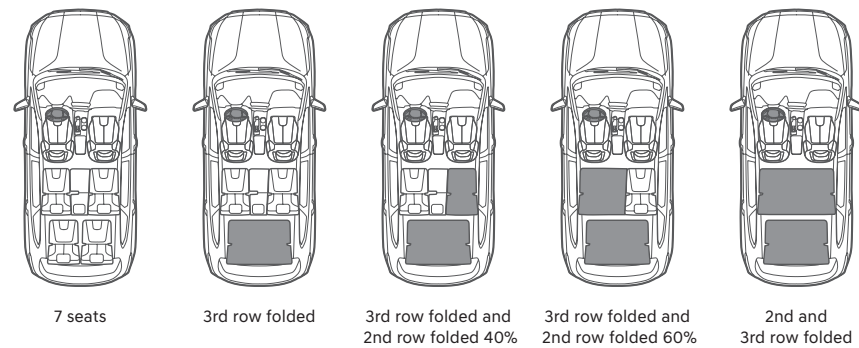
Bridge-type centre console & shift-by-wire automatic transmission.



12.3" full LCD cluster & Blind-Spot View Monitor.



8" display with wireless smartphone mirroring. / Wireless smartphone charging system.



Enjoy first class comfort for up to 7 passengers. A wide choice of seat variations and convenient features will accommodate everyone, everywhere. Experience the very best in flexible convenience with a highly versatile seating system and smart everyday helpers like a Smart Power Tailgate for a lift when both hands are full. Packing for a big trip? You can slide the 60/40 split-folding second-row seats to fit both passengers and cargo with ease. A simple push of a button is all it takes to slide the 2nd seat row up and out of the way for easy entry to the back row of seats. And Santa Fe's new platform and layout design provides more room in the second row and cargo area, ensuring a comfortable journey for all.



2nd and 3rd row seats & space.



One-touch walk-in & folding. / Smart Power Tailgate.





**More efficiency.
More control.
More electrified
choices.**

Find your perfect drive. Available with an innovative all-wheel-drive system and a terrain and drive mode selector that puts you in control – this highly capable SUV will be available with three different powertrains. Choose from a highly efficient new diesel with lower CO2 emissions, a dynamic new hybrid – and for the first time ever – a plug-in hybrid version for all-electric drive at the push of a button.

Efficient power and precise control.

The four-cylinder ‘SmartStream’ diesel engine produces 202 PS and 440 Nm torque and is available with two or four-wheel drive. The new engine block consists of aluminium instead of steel, for a weight reduction of 19.5 kg. Many other components have been improved as well, leading to better fuel efficiency and 8 % lower CO₂ emissions compared to the previous engine generation. It is combined with a newly developed 8-speed wet double-clutch transmission (8DCT), offering the smooth shifting characteristics of a conventional automatic transmission with improved fuel efficiency and enhanced acceleration.

2.2 CRDi Diesel Engine

202 Maximum Power
ps / 3,800 rpm

45.0 Maximum Torque
kg.m / 1,750–2,750 rpm

Select your drive mode.

Simply turn the knob to select the mode that suits you best: COMFORT for everyday driving, ECO for optimal fuel efficiency, SPORT for quicker acceleration, or SMART which automatically adjusts gear shift intervals based on recent driving patterns.



Terrain Mode selector.

Snow? Sand? Mud? No problem. The control dial lets you quickly switch drive modes to optimise driving performance and all-wheel drive settings for different situations. A quick glance at the centre cluster or navigation screen confirms the selected mode.

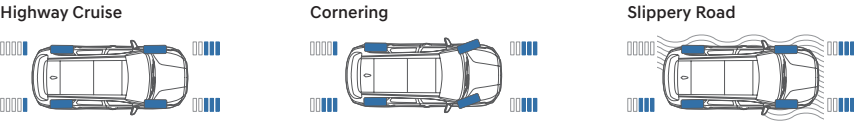




Built to drive great on busy city streets and bumpy country roads, the highly capable new Santa Fe's technology and flexibility make it a family SUV ready for any situation. Features such as its AWD system, which optimally distributes power to the front and rear wheels depending on the driving conditions make sure that every journey is both safe and comfortable.

HTRAC™ All-Wheel Drive System.

The innovative HTRAC™ All-Wheel Drive system delivers optimum handling and cornering – which makes driving slippery city streets and snowy country roads safer and more relaxed. This system automatically senses slippery or unstable driving conditions and proactively balances power between the front and rear wheels to ensure stability at all times.



All-new vehicle platform.

The new Santa Fe is based on the all-new third-generation Hyundai vehicle platform, which has maximized vehicle stability and created more cargo space and legroom as well as improved performance, handling and fuel efficiency. It also delivers significant improvements in collision safety, thanks to the increased usage of advanced high-strength steel and hot stamping.

| 2nd Row Leg Room (7 seats) | 3rd Row Leg Room | Cargo Capacity (7 seats, 3rd row folded) |
|----------------------------|------------------|--|
| 1,040 mm | 746 mm | 634 ℓ (VDA) |



Enjoy the power of electrified choice.

Hybrid / Plug-in Hybrid



Giving you more electrified options than ever before, the new Santa Fe is the first Hyundai in Europe available with the new Smartstream hybrid and plug-in hybrid powertrain. And thanks to the new vehicle platform, the battery pack is located beneath the passenger seat in the hybrid version and beneath the driver and passenger seats in the plug-in hybrid version – which means you get a boost in electric efficiency with no impact on cabin or luggage space.

Hybrid



With its dynamic tandem of a turbocharged petrol direct injection engine and a powerful battery powered electric motor, the new Santa Fe Hybrid is taking fuel efficiency to the next level. All without you having to charge a battery or change your driving habits. Regenerative braking charges the battery, so you don't have to. Depending on the driving situation, the Hybrid switches seamlessly between the electric motor and conventional engine, sometimes utilising both at the same time.

1.6T GDi Gasoline Engine

180 Maximum Power
ps / 5,500 rpm

27.0 Maximum Torque
kg.m / 1,500–4,500 rpm

Hybrid Electric Motor

44.2 kW Maximum Power

264 Nm Maximum Torque

Plug-in Hybrid



Electric when you want it. Petrol when you need it. Available in early 2021, the new Santa Fe Plug-in Hybrid delivers combined 265 PS of combined power output and an all-electric mode at the push of a button. Once the electric-only range is depleted, the Plug-in then operates like the Hybrid, switching seamlessly back to its petrol engine. Enjoy complete range flexibility to go as far as you need to. And when you get there, you can plug into a charging station.

1.6T GDi Gasoline Engine

180 Maximum Power
ps / 5,500 rpm

27.0 Maximum Torque
kg.m / 1,500–4,500 rpm

Plug-in Hybrid Electric Motor

66.9 kW Maximum Power

304 Nm Maximum Torque





Sophisticated tech for more safety and comfort.

The new Santa Fe has been upgraded with a stellar range of advanced smart tech to ensure that you – and your family – can stay safe and make the most of every journey. From the latest in intuitive connectivity to a comprehensive range of first-class safety features, the new Santa Fe is equipped with advanced, intuitive technology to support your active lifestyle and minimize the dangers in our everyday driving environment.



Image on the left: Parking Collision Avoidance Assist – Rear (PCA-R)

Perfect for parking lots. When reversing out of areas with low visibility, the system warns you if vehicles are approaching from the side or behind with a visual and audible alert.

Remote Smart Parking Assist (RSPA)

Park at the push of a button. Just find a parking space and push start via the key fob. Your car can then autonomously get into and out of a parallel or perpendicular parking spaces – without you in it.



Surround View Monitor (SVM)

Enjoy 360° visibility for easier and safer parking. 4 HD cameras mounted on the front, sides, and rear of the vehicle show the surroundings in real time.

The new Santa Fe offers you the very best in convenience with a wide range of innovative features designed to make every drive safer and more comfortable.



12.3" fully digital cluster.



Head-up display. / KRELL premium sound system.



Driver Attention Warning. / Rear occupant alert.



E-call button.

Bluelink® Connected Car Services.

Naturally, the new Santa Fe has also been upgraded with all the latest tech like smart phone mirroring and cutting-edge connectivity features like Bluelink® Connected Car Services, which lets you control your car from your smartphone – or with your voice. A free five-year subscription to Hyundai’s LIVE Services is included with the 10.25” and 8” touch screen navigation system with real-time traffic information, weather, parking finder and much, much more.



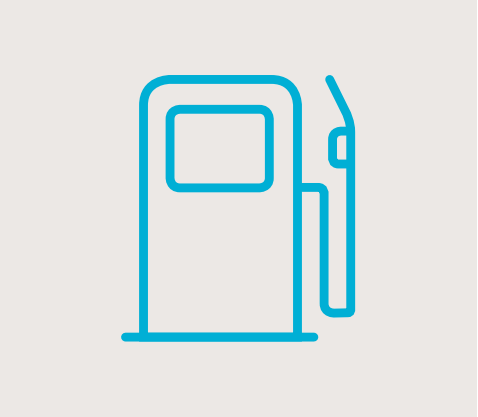
Destination send to car.
Simply get in and press go. If your Hyundai is equipped with navigation, you can use the Bluelink app to search for destinations while outside of your car. Bluelink then syncs with your navigation system, loading the route so that it is ready to go when you are.

Find my car.
Forgot where you parked? No problem. Just open the Bluelink app and the map will guide you there.



Remote door lock & unlock.
Forget to lock your car? Don't worry, your Hyundai will let you know by sending a push notification to your smartphone. Then, after entering your PIN, you can lock or unlock the doors using a button in the Bluelink app.

On-demand diagnostics.
For more peace of mind, you can run a full vehicle diagnostic check on your vehicle's health using the Bluelink app on your smartphone.



Live fuel price information.
Find fuel when you need it, at a nice price – the continually updated fuel service coverage provides you with current fuel prices and information on location, opening times, and payment methods – all displayed on the navigation touch screen.

On & off-street parking.
Find a parking spot faster for more efficient and stress-free parking. The parking information features help you find and compare parking options in garages, parking lots and on the street.



Connected Routing.
Enjoy more accurate traffic information, more precise times of arrival, and more reliable route recalculations so you get there faster. Cloud based navigation uses real-time and historical data for better routing and forecasting.

Last Mile Guidance.
If you have to park your Hyundai before you reach your end destination, you can hand over navigation from the car to the app. Your phone will then guide you where you want to go with the help of augmented reality or Google Maps.

Hyundai SmartSense.

Enjoy more safety and peace of mind. New state-of-the-art Hyundai SmartSense safety features and Advanced Driver Assistance Systems bring the new Santa Fe in line with competitors from the premium class. From automatically braking to avoid collisions and keeping you in your lane, to detecting vehicles in the blind spot, it can alert you of potential dangers around you when driving.



Highway Driving Assist (HDA)
Keeps you centred in your lane and traveling at a safe distance behind the car ahead when Smart Cruise Control or Lane Following Assist is active.



Navigation-based Smart Cruise Control (NSCC)
Utilizes the state-of-the-art navigation system to anticipate upcoming curves or straights on highways and automatically adjusts speed for safer driving.

Lane Following Assist (LFA)
Keeps you centred and safer. When activated, LFA keeps the car centred in its lane at speeds between 0 and 180 kilometres per hour on highways and city streets.



Rear Cross-Traffic Collision-Avoidance Assist (RCCA)
When reversing out of areas with low visibility, the system not only warns the driver if vehicles approach from the side – it also applies the brakes automatically.



Forward Collision-Avoidance Assist (FCA, junction turning)
The FCA system warns you and automatically brakes when it detects sudden braking by the car ahead or detects pedestrians or cyclists in your path. The same applies to collision risks with oncoming vehicles while turning left at an intersection.



Blind-Spot Collision-Avoidance Assist (BCA)
Using radar sensors in the lower rear bumper and a front camera, the system warns you of traffic in the blind spot area. Should you set the turn indicator in such a situation, it will sound an acoustic alert and brake to prevent collision.

Safe Exit Assist (SEA)
This clever feature prevents accidents by detecting vehicles approaching from behind and temporarily locking the rear child lock doors, so that passengers can only exit the car when it is safe to do so.

Interior colours



Black one-tone interior



Dark Beige two-tone interior



Cognac two-tone interior



Camel two-tone interior

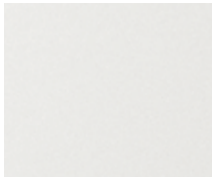


Camel two-tone interior (Luxury Package)



Light Grey two-tone interior (Luxury Package)

Exterior colours / Wheels



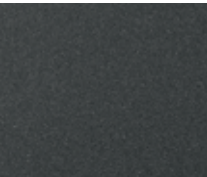
White Cream (WW2)



Glacier White (W3A)



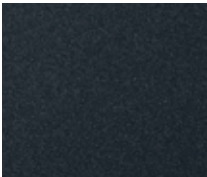
Typhoon Silver (T2X)



Magnetic Force (M2F)



Phantom Black (NKA)



Lagoon Blue (UE3)



Rain Forest (R2F)



Taiga Brown (R)



Lava Orange (YR2)



17" Alloy Wheels



17" Alloy Wheels
(HEV only)



18" Alloy Wheels



19" Alloy Wheels
(HEV, PHEV only)



20" Alloy Wheels



20" Alloy Wheels

Specifications

| Type | Diesel | HEV | PHEV |
|-----------------------------------|------------------------------------|------------------------------------|------------------------------------|
| Engine | 2.2 CRDi Diesel Engine | 1.6 T-GDi Gasoline Engine | 1.6 T-GDi Gasoline Engine |
| Engine type | In Line 4 - Cylinders | In Line 4 - Cylinders | In Line 4 - Cylinders |
| Displacement (cc) | 2,151 | 1,598 | 1,598 |
| Max. Power (ps / rpm) | 202 / 3,800 | 180 / 5,500 | 180 / 5,500 |
| Max. Torque (kg.m / rpm) | 45.0 / 1,750 ~ 2,750 | 27.0 / 1,500~4,500 | 27.0 / 1,500~4,500 |
| Transmission | 8 DCT | 6 AT | 6 AT |
| Traction System | 2WD / H-TRAC 4WD | 2WD / H-TRAC 4WD | H-TRAC 4WD |
| Electric Motor | | | |
| Electric Motor type | - | Permanent Magnet Synchronous Motor | Permanent Magnet Synchronous Motor |
| Electric Motor Max. Power (kW) | - | 44.2 | 66.9 |
| Electric Motor Max. Torque (Nm) | - | 264 | 304 |
| Performance | | | |
| Max. Speed (km/h) | 205 | 187 | 187 |
| 0 to 100 km/h acceleration (sec) | 9,2 | 9,1 | 8,8 |
| 80 to 120 km/h acceleration (sec) | 6,4 | 6,2 | 5,9 |
| Suspension | | | |
| Front | McPherson Strut Type | | |
| Rear | Multi-Link Type | | |
| Tire | | | |
| | 235/65 R17, 235/60 R18, 255/45 R20 | 235/65 R17, 235/55 R19 | |

- The above values are results from internal testing and are subject to change after validation.
- Some of the equipment illustrated or described in this catalog may not be supplied as standard equipment and may be available at extra cost.
- Hyundai Motor Company reserves the right to change specifications and equipment without prior notice.
- The color plates shown may vary slightly from the actual colors due to the limitations of the printing process.
- Please consult your dealer for full information and availability on colors and trims.



Overall Width
Wheel Tread

1,900
1,637



Overall Length
Wheel Base

4,785
2,765

Overall Height
(Including roof rack)

1,685 (1,710)



Wheel Tread

1,647

Unit : mm



Here's to life's journeys.

They can be short or long. Across the city, or halfway across the country. You can travel solo, or take your tribe on a family adventure. No matter how you choose to live your life, the new Santa Fe makes living it easier. It's designed to create a stylish comfort zone for you and your loved ones to enjoy life's special moments – wherever the road takes you.

Dealer stamp